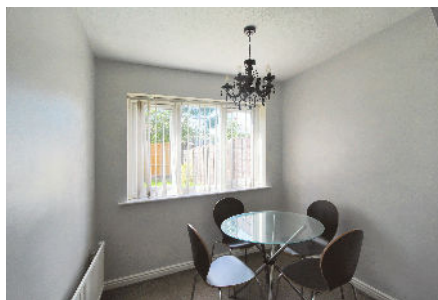


## 3 Viscount Drive, Heald Green, SK8 3HU

Offers Over £295,000

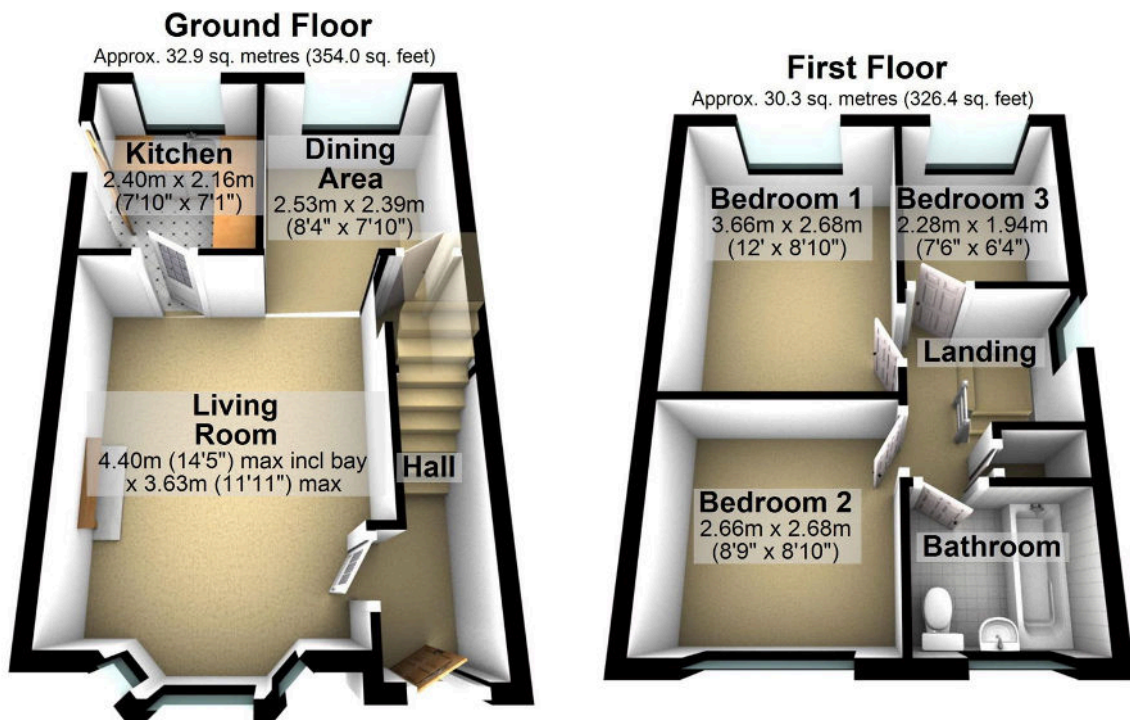
🛏 3 🚿 1 🚗 1



Situated on an established modern development, this detached home offers a fantastic opportunity to create your dream space. Located near to Heald Green village, the train station, Manchester International Airport, and the A34, this property is ideal for commuters heading to Manchester or Wilmslow. Though in need of some TLC, this is a rare chance to personalize, reconfigure, or even extend (subject to planning) the existing accommodation to suit your lifestyle. Downstairs is a hall, bay fronted living room leading to a separate dining area and a kitchen. Upstairs, you'll find three bedrooms and a bathroom/WC combined. Other features include gas central heating and double glazing. Outside, there is off-road parking for several cars and a private lawned rear garden, which is not overlooked.

## Key Features

- Prime location in Heald Green, offering convenience & accessibility
- Blank canvas with potential to personalize, reconfigure, or extend
- Front living room with dining area & kitchen off
- Ample off-road parking with space for several cars
- Good value, viewing highly recommended
- Ideal for commuters with easy access to train station, airport & A34
- Detached home with three bedrooms
- Private, not overlooked, lawned rear garden
- Gas central heating & double glazing
- Property being sold with no onward chain



Total area: approx. 63.2 sq. metres (680.4 sq. feet)