

11 Cartmel Close, Gatley, SK8 4QP

Offers Over £375,000

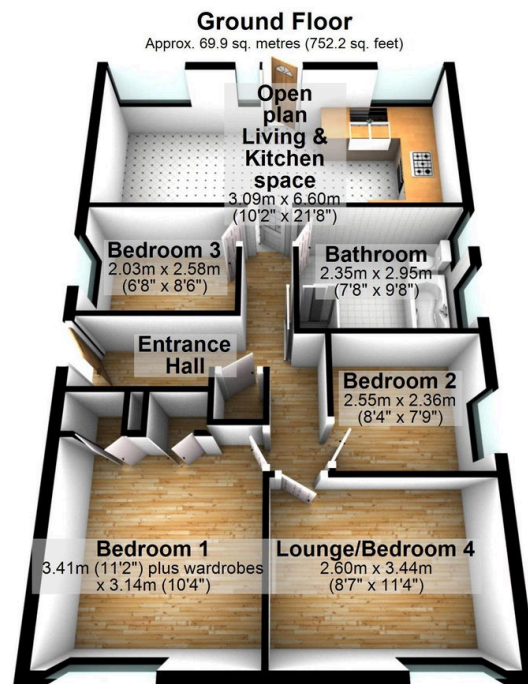
🛏 4 🚿 1 🚗 1



Nestled on a quiet cul-de-sac within the sought-after Lakes Estate in Gatley, this stunningly modernised detached home has been reimagined with style and functionality in mind, and feels more like a house than a traditional bungalow. With three bedrooms and an additional living room or optional fourth bedroom, the layout is designed to adapt effortlessly to your lifestyle. The heart of the home is the beautifully reconfigured open-plan living and kitchen area, with views over the rear garden. This impressive home also includes a luxury bathroom/wet room, gas central heating, and double glazing. Externally, there is off road parking and an attached garage, while the rear garden has been landscaped to create wonderful outside space with complete privacy.

Key Features

- Prime cul-de-sac location on Lakes estate
- Recently modernized with quality finishes
- Four versatile bedrooms for flexible living
- Gas central heating and double glazing
- Side drive with attached garage
- Easy access to Gatley village, station, and motorways
- Stunning open-plan living/kitchen space with garden views
- Luxury bathroom with wet room
- Private, landscaped rear garden
- Move-in ready bungalow in popular location



Total area: approx. 69.9 sq. metres (752.2 sq. feet)