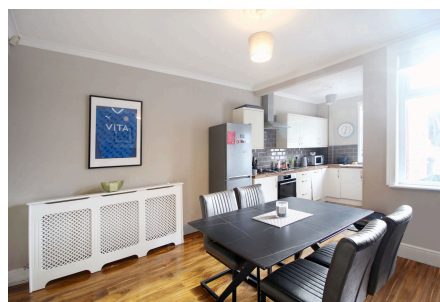


32 Cromer Road, Cheadle, SK8 2AX

£290,000

🛏 2 🚿 1 🚗 1



Quietly situated in a highly sought-after residential location, just a short stroll from the vibrant Cheadle village, this delightful mid-terraced property is perfect for first-time buyers or those looking to downsize. With excellent kerb appeal, including off-road parking at the front, the home includes a front living room, complemented by an impressive open-plan dining kitchen featuring a charming stove fire and a contemporary fitted kitchen. Upstairs, you'll find two generously sized bedrooms and a bathroom/WC combined. Other salient features include gas central heating and double glazing. To the rear, an enclosed lawned garden is a further attraction. With its blend of character, modern convenience, and a prime location, this property is expected to attract considerable interest. Early viewing is highly recommended.

Key Features

- Attractive middle terraced house with off road parking
- Two generous bedrooms
- Stylish open plan dining room and fitted kitchen
- Gas central heating and double glazing
- Well presented and ready to move into
- Prime location a short walk from Cheadle village
- Front living room
- Bathroom/WC combined
- Rear courtyard and private, enclosed garden
- Excellent value starter home



Total area: approx. 75.3 sq. metres (810.2 sq. feet)