



RESIDENTIAL SALES & LETTING AGENTS

✉ sales@mkiea.co.uk 🌐 www.mkiea.co.uk ☎ 0161 428 3663

Brookfield Road, Cheadle, SK8 1EY

Offers Over £425,000

4 1 2



A beautifully presented and thoughtfully extended four bedroom semi-detached family home, occupying a large plot with extensive off-road parking and a stunning landscaped rear garden, conveniently positioned within easy reach of Cheadle Village, highly regarded local schools and the motorway network.

This attractive family home offers spacious and versatile accommodation extending to over two floors and has been extremely well maintained and improved by the current owners to create a property ready for immediate occupation.

The accommodation includes an entrance hall, spacious through living room, a bright and elegant separate dining room, ideal for both family meals and entertaining guests, and a contemporary fitted kitchen featuring a comprehensive range of modern units, which was designed and planned with kitchen workflow in mind.

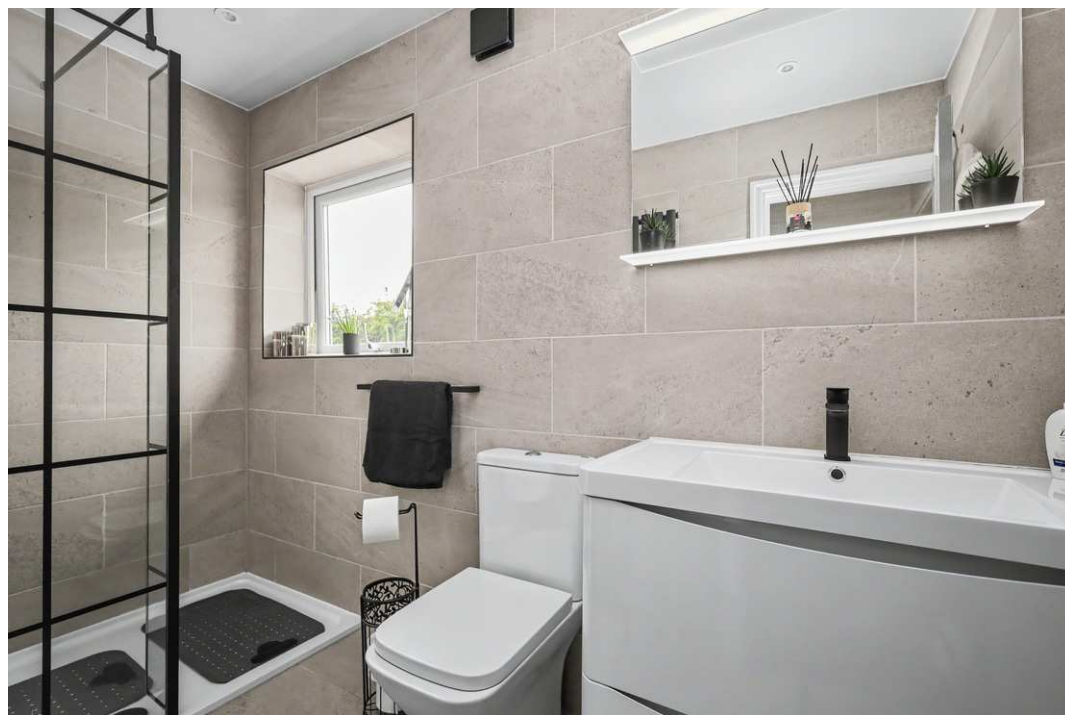
To the rear of the property is an additional space, providing excellent flexibility and perfectly suited as a home office, children's play area, reading room or additional sitting area depending upon individual requirements. A useful ground floor WC completes the ground floor accommodation.

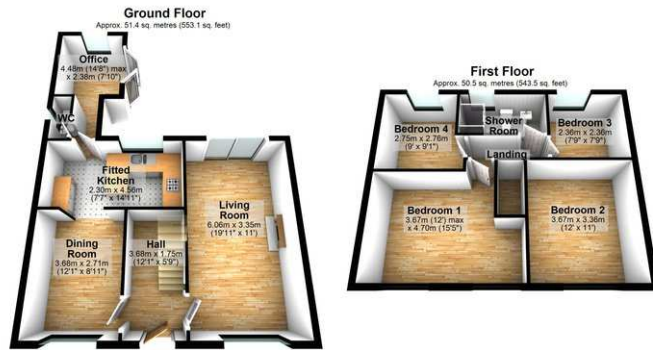
To the first floor are four well proportioned bedrooms, offering ample space for growing families, together with a stylish luxury shower room finished to the highest standard.

Externally, the property continues to impress. To the front is extensive off-road parking for multiple vehicles, whilst to the rear lies a beautifully landscaped family garden. Predominantly laid to lawn and surrounded by mature trees, established planting and colourful borders, the garden provides an exceptional degree of privacy together with several seating and entertaining areas, creating a wonderful outdoor space for both children and adults to enjoy throughout the year.

Further benefits include gas central heating and double glazing.

Properties of this style, size and presentation, particularly those with gardens of this quality, are always in strong demand and an early viewing is highly recommended.





Total area: approx. 101.9 sq. metres (1096.6 sq. feet)

- Extended four-bedroom semi-detached family home
- Beautifully presented throughout
- Spacious living room and separate dining room
- Contemporary fitted kitchen
- Flexible rear room ideal as a home office
- Useful ground floor WC
- Luxury shower room
- Extensive off-road parking for multiple vehicles
- Stunning landscaped rear garden with mature planting and seating areas
- Convenient location close to Cheadle Village, popular schools and motorway links



Your home may be repossessed if you do not keep up repayments on your mortgage N.B. Maurice Kilbride Residential Sales and Lettings Limited for themselves and for the vendors or lessors of this property whose agents they are given notice that; 1. The particulars are set out as a general outline only for the guidance of intending purchasers or lesser and do not constitute part of an offer or contract. 2. All descriptions, dimensions, references and condition or necessary permission for use and occupation and other details are given without responsibility or intending purchasers or tenants should not rely on them as statement or representations of face must satisfy themselves in inspection or otherwise as to the correctness of each of them. 3. No person in the employment of Maurice Kilbride Residential Sales or Lettings Limited has any authority to make or give any representation or warranty whatever in relation to this property.