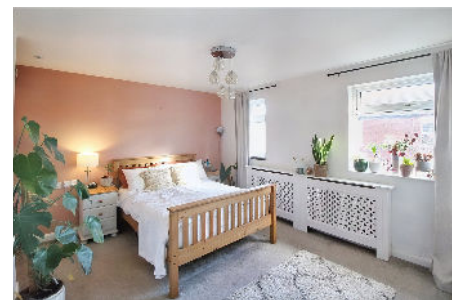


## 57 Hill Street, Withington, Manchester, M20 3FY

Offers Over £295,000

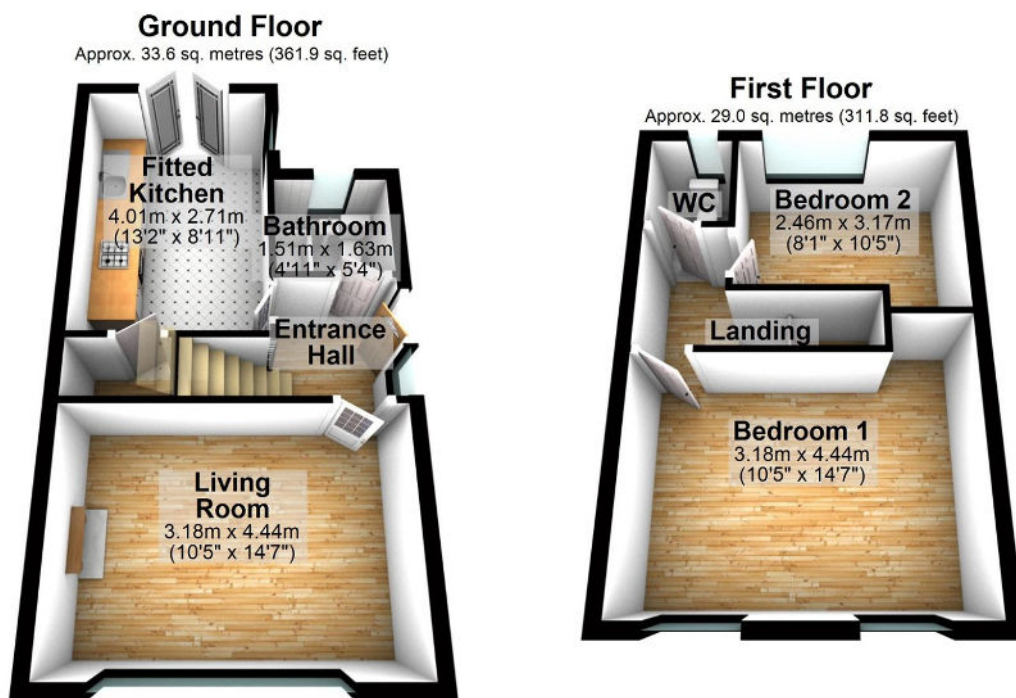
🛏 2 🚿 1 🚗 1



This stylishly presented semi detached house would make a wonderful starter home. Situated a few minutes walk from the fashionable village centre of Withington, a cosmopolitan suburb of Manchester, just six miles south of the City centre. The property includes two excellent size bedrooms, a generous living room, a contemporary fitted kitchen/dining room, ground floor bathroom/WC and a second WC upstairs. Other features include gas central heating and double glazing. Externally, there is off road parking space to the front and there is a detached garage at rear, as well a private garden with raised seating area. There is also on street residents permit parking. For commuters, there are excellent road, rail and tram facilities near by.

## Key Features

- Stylishly presented semi detached home
- Six miles South of Manchester City Centre
- Two large bedrooms
- Cotemporary fitted kitchen/Breakfast room
- Gas central heating and double glazing
- Sought after location close to the centre of Withington
- Close to shops, schools and excellent transport facilities
- Generous front living room
- Ground floor bathroom/WC & first floor WC
- Off road parking, detached garage and private rear garden



Total area: approx. 62.6 sq. metres (673.7 sq. feet)