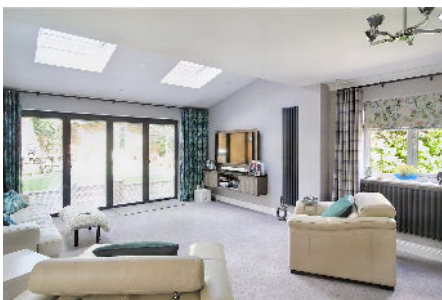


Sykes Meadow, Edgeley, SK3 9RJ

Offers Over £420,000

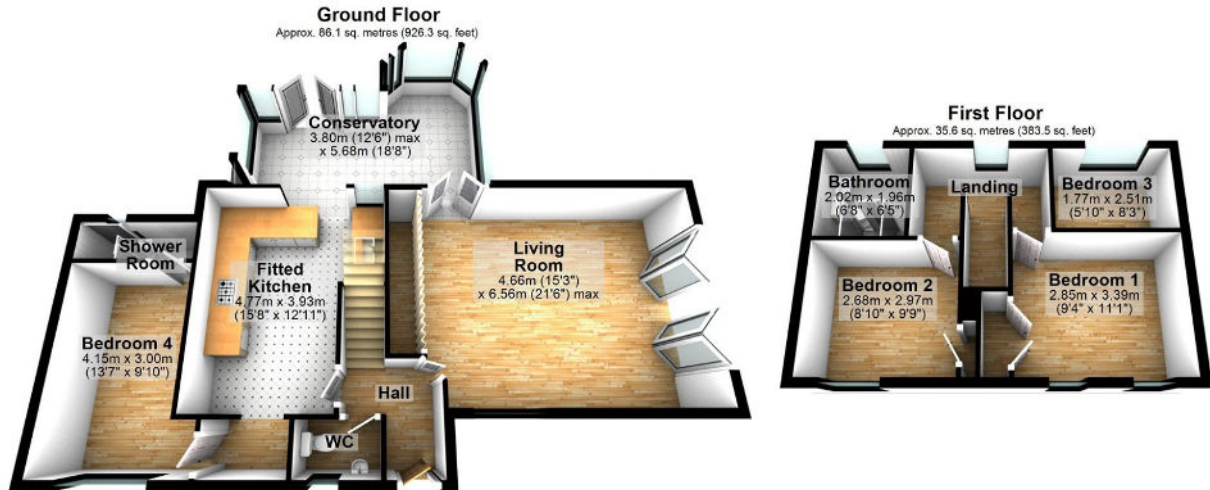
🛏 4 🚿 2 🚗 2



Take a look at this modern detached family home, which is nestled on a quiet cul de sac of this popular residential development, close to Stockport town centre. You will find a combination of space, style and versatility including a wonderful lounge with bi fold doors to outside. The conservatory doubles as a second reception room and dining area, whilst the heart of the home is the contemporary fitted kitchen. A ground floor WC adds to the convenience, while a clever garage conversion has transformed into a self-contained fourth bedroom with its own shower room - perfect for an elderly relative or an independent teenager. Upstairs, you'll find three more bedrooms and a bathroom/WC. The outdoors are equally impressive, with gardens that wrap around the side and rear. A highlight is the large chalet, with potential for a variety of uses.

Key Features

- Substantially extended and improved detached family home
- Close to Stockport town centre and train station
- Large conservatory which doubles as a dining room and second living room
- Ground floor self contained fourth bedroom with shower room off
- Gardens to side and rear including useful detached chalet
- Situated on a quiet cul de sac on popular modern development
- Extended living room with bi fold doors to outside
- Contemporary fitted kitchen with appliances
- Three further bedrooms and bathroom/WC combined upstairs
- Off road parking for several vehicles



Total area: approx. 121.7 sq. metres (1309.8 sq. feet)