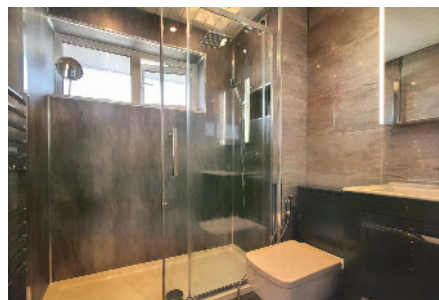


## 63 Long Croft Lane, Cheadle Hulme, SK8 6SE

£400,000

🛏 3 🚿 1 🚗 1



Modern detached family home on a small residential development, within the catchment for the very popular Cheadle Hulme High School and walking distance of Cheadle Hulme village, with its excellent range of shops, cafe bars and train station. The property offers well presented accommodation including an entrance hall with WC off, an open plan living and dining room, modern fitted kitchen, three bedrooms and a luxury shower room. Other features include gas central heating and double glazing. Externally, there is a private South facing lawned rear garden and there is off road parking to the side. An early appointment to view is highly recommended.

## Key Features

- Modern detached house within walking distance of Cheadle Hulme village
- Entrance hall with WC off
- Modern fitted kitchen
- Luxury shower room
- Private South facing rear garden and off road parking
- Catchment for Cheadle Hulme High School
- Open plan living and dining room
- Three bedrooms
- Gas central heating and double glazing
- Well presented, ready to move into accommodation - viewing recommended

