

172 Councillor Lane, Cheadle, SK8 2JH

£95,000

🛏 1 🚿 1 🚗 1



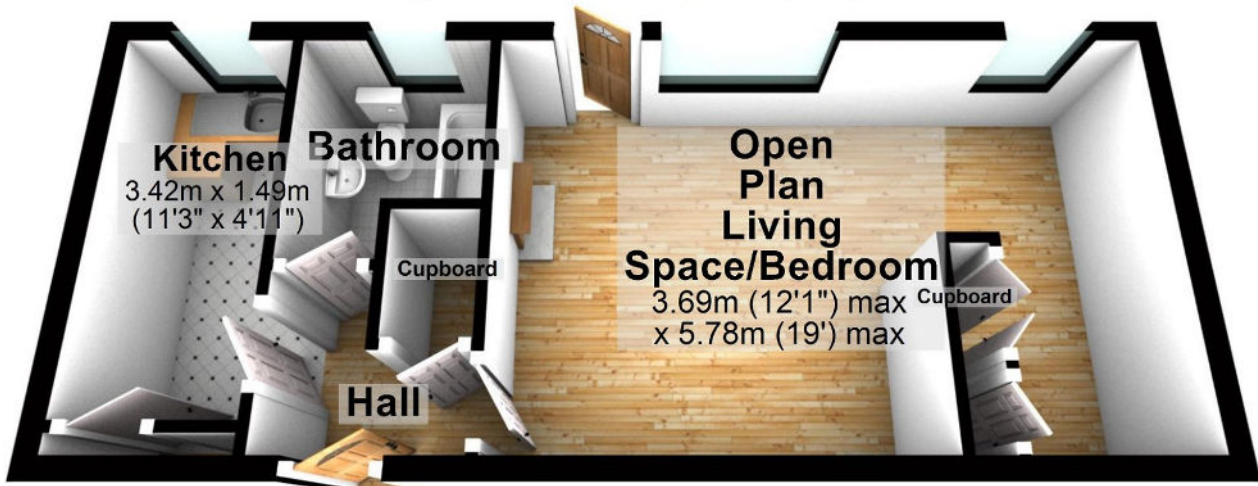
A first floor, purpose built studio flat that would make a great value starter home or buy to let investment opportunity. Situated in a convenient location, close to local shops, schools and access to the motorway, the flat offers a blank canvass and opportunity to personalise and add value. The accommodation includes an entrance hall, open plan living space and bedroom, which is partitioned off and a small balcony. There is also a kitchen and bathroom. Other features include double glazing and electric heating. Externally, there are communal gardens and there is plenty of on street parking. The property is being sold with no onward chain and at such a competitive price, is sure to generate a lot of interest and an early viewing is therefore recommended.

Key Features

- First floor purpose built studio flat with balcony
- Potential to personalise and add value
- Great buy to let potential for investors
- Kitchen
- Double glazing and electric heating
- Convenient location close to shops, schools and motorway access
- Excellent value start home
- Open plan living space and bedroom
- Bathroom/WC combined
- For sale with no onward chain

First Floor

Approx. 33.4 sq. metres (359.9 sq. feet)



Total area: approx. 33.4 sq. metres (359.9 sq. feet)