

4 Cromer Road, Cheadle, SK8 2AX

"Offers over" £285,000

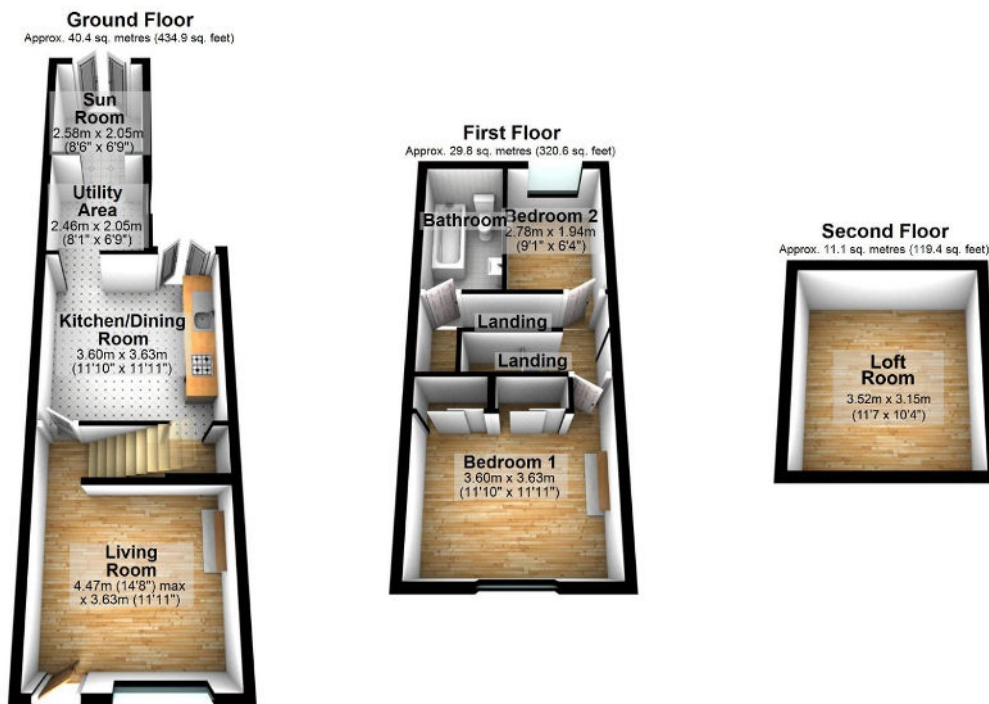
🛏 2 🚿 1 🚗 1



This delightful middle terraced home isn't just a house, its a lifestyle, set in the heart of the Cheadle village community, within walking distance of the shops, café bars and restaurants and popular schools. Abney Park is just around the corner and for commuters there is motorway access and Gatley station nearby. The property has been painstakingly improved by the current owner and cleverly combines many original features with contemporary styling and includes a living room with feature wood burning stove, an open plan dining space and stylish fitted kitchen, plus a utility room and sun room that offer versatile spaces. Upstairs are two bedrooms and a bathroom/WC. There is also a loft room with potential for a variety of uses. Other features include gas central heating, double glazing and a delightful rear courtyard garden.

Key Features

- Charming middle terraced house close to the heart of Cheadle's fashionable village
- Living room with feature brick chimney and log burning stove
- Utility area and sunroom creating versatile spaces
- Bonus loft room offering potential for various uses
- Gas central heating and double glazing for year-round comfort and efficiency
- Thoughtfully improved, seamlessly blending original features with contemporary style
- Open plan dining area and stylish contemporary kitchen
- Two bedrooms and attractive bathroom/WC
- Ideal for first-time buyers and commuters with easy access to amenities and transport links
- Delightful courtyard garden for Summer al fresco dining and entertaining



Total area: approx. 81.3 sq. metres (874.9 sq. feet)